

Cable Entry Protection

Protector plates for the top wall have been specifically designed to make your job easier.

VM03CB

Top Wall Cable Protector

Can be drilled out to allow the entry of 20mm fittings. The rear of the plate is designed to secure the locknut.



VM03CE

Top Wall Cable Protector

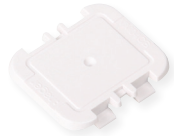
Allows safe protection for the maximum number of circuits to enter the consumer unit.



VM04CB

Meter Tail Cable Protector

Solid plate to allow flexibility of the size and shape of the aperture required.



VM04CE

Meter Tail Cable Protector

Comes with open apertures for two 25mm² meter tails and one 16mm² CPC.



VM02CE

Rear Entry Cable Protector

Fits into one of the rear entry apertures, with 4 sections which can be removed as needed.



Hager Ltd.

Hortonwood 50
Telford
Shropshire
TF1 7FT

Customer Contact Centre: 01952 675612
Technical Helpline: 01952 675689

[hager.com/uk](https://www.hager.com/uk)

sales@hager.co.uk

technical@hager.co.uk



WhatsApp Tech Support: 07778 161000



@HagerUK



@HagerUK



Hager UK



@HagerukTV



@Hager_uk

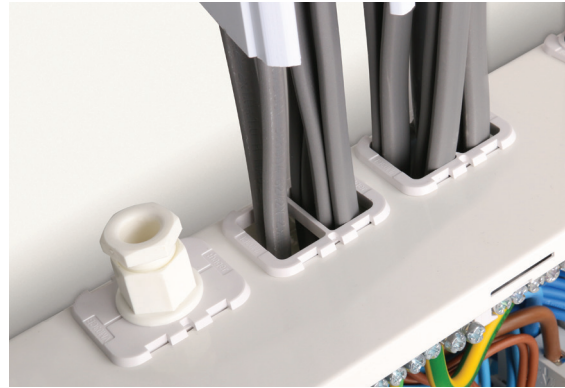
At A Glance

Cable Entry Protection



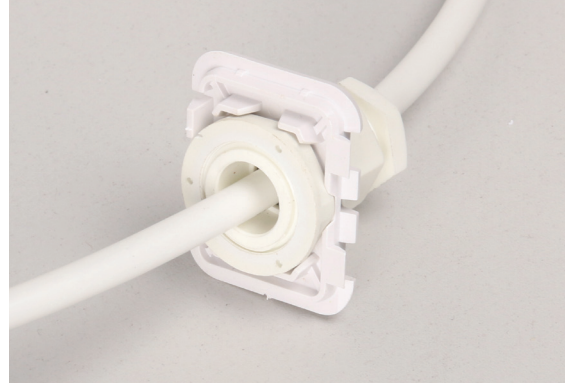
:hager

We provide cable entry plate solutions for all of our consumer unit with round knockouts.



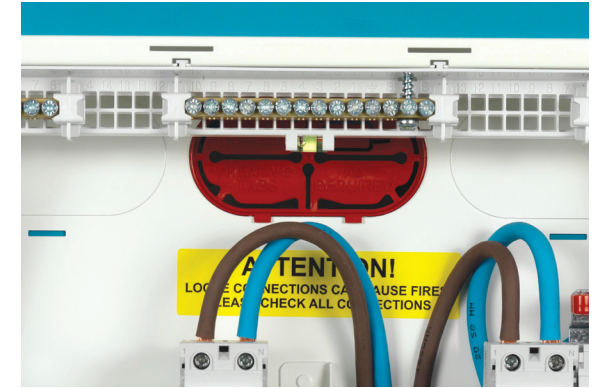
Save Time

Cable entry plates simply clip into the knockout hole, providing a safe and secure edge to bring in cables to the consumer unit.



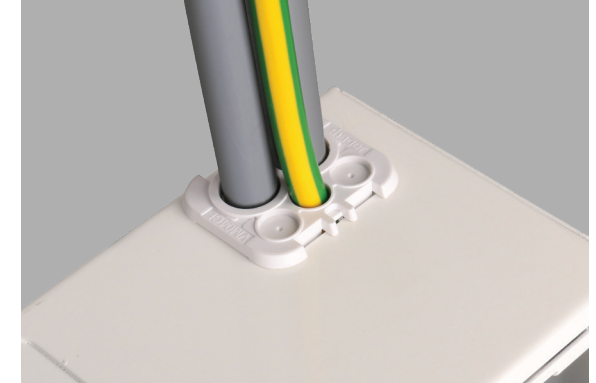
Providing Flexibility

Some of our cable entry plates are designed for specific applications. The **VM03CB** for example, is designed to secure a 20mm locknut in position when using compression glands etc.



Rear Cable Entry

For cables that are brought in from the back of the board, we provide a larger plate (**VM02CE**), which has removable sections, to accommodate the number of circuits required. We find the plate is a better alternative to grommet stripping.



Meter Tail Entry Protection

The **VM04CE** comes with open apertures for two 25mm² meter tails and one 16mm² CPC, with marked areas which can be drilled out to allow additional CPCs.

Square Knockouts

Our knockouts on Design range boards are positioned at the correct distance from the wall to accommodate common sizes of trunking. We designed them to be rectangular to provide the maximum cable capacity and be aligned with the shape of trunking.

