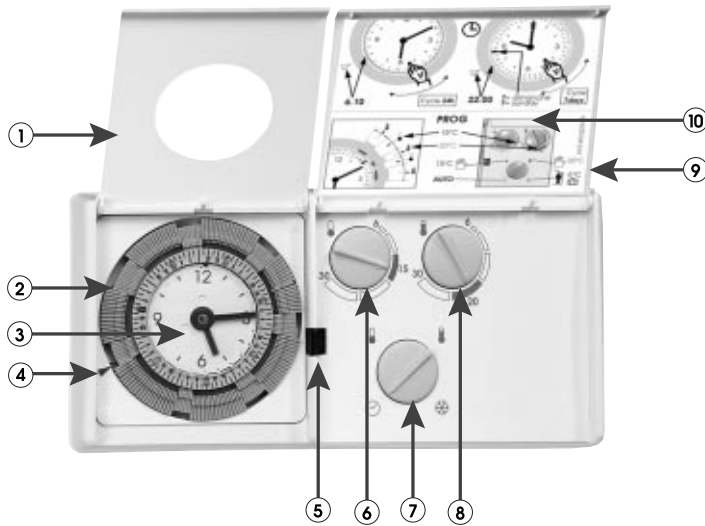




### ● PRESENTATION

Le THERMOFLASH TS permet de régler votre chauffage en fonction de votre mode de vie, pour assurer votre confort et une meilleure gestion de l'énergie. Il a été conçu pour s'adapter à tout type de chauffage : gaz - fioul - électrique.



- ① Couvercle transparent
- ② Segments de programmation
- ③ Disque de mise à l'heure
- ④ Repère de mise à l'heure
- ⑤ Témoin de fonctionnement du chauffage
- ⑥ Bouton de réglage de la température réduite
- ⑦ Sélecteur de choix du régime de fonctionnement
- ⑧ Bouton de réglage de la température confort
- ⑨ Couvercle
- ⑩ Notice condensée

### ■ SOMMAIRE

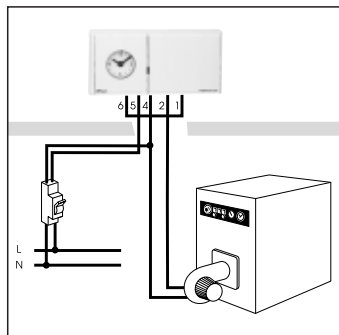
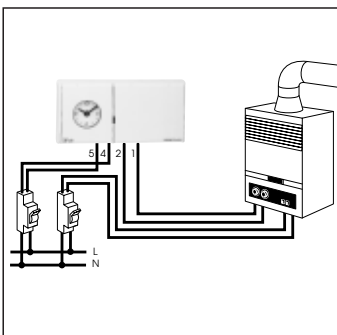
- 1 Installation.
  - Emplacement.
  - Raccordements électriques.
- 2 Mise à l'heure et au jour actuel.
- 3 Réglage des températures.
- 4 Choix du régime de fonctionnement.
- 5 Programmation de l'horloge.
- 6 Caractéristiques techniques.

### 1 INSTALLATION

#### ■ Emplacement :

Le Thermo Flash doit être installé à environ 1,5 mètres du sol, sur un mur intérieur, à l'abri du rayonnement solaire direct et de toute perturbation thermique, telle que : lampe d'éclairage, téléviseur, Etc... Prévoir un emplacement qui permet l'ouverture des deux couvercles (① et ⑨) vers le haut.

#### ■ Raccordements électriques :



### 2 MISE A L'HEURE ET AU JOUR ACTUEL

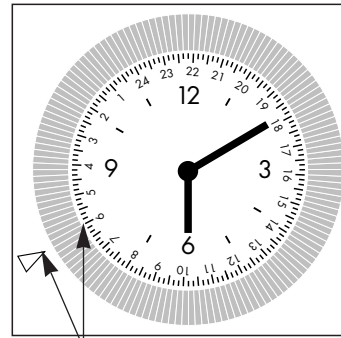
#### A réaliser impérativement en premier !

- Soulever le couvercle ①.
- Tenir compte du repère ④ pour mettre l'horloge à l'heure et au jour.
- Tourner le disque de mise à l'heure ③ (le sens est indifférent) pour positionner les aiguilles sur l'heure actuelle.

#### Exemples :

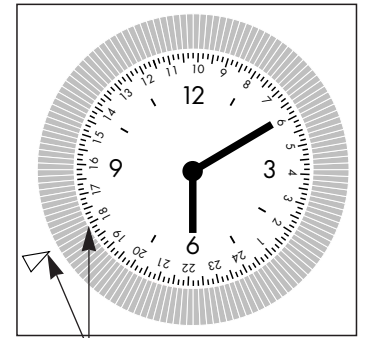
##### Modèle journalier (24 h)

ici 6 h. 10 du matin



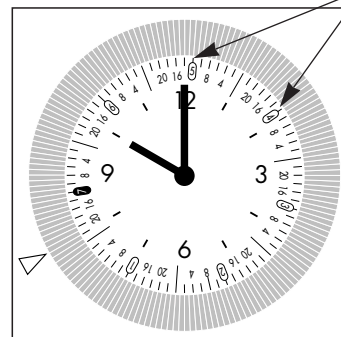
Heure actuelle face au repère

ici 6 h. 10 du soir (18 h. 10)

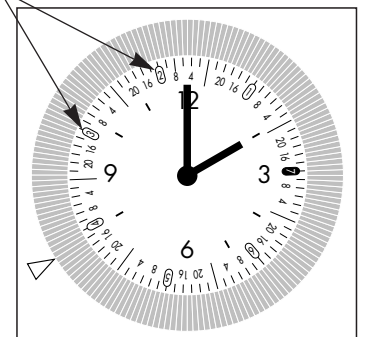


Heure actuelle face au repère

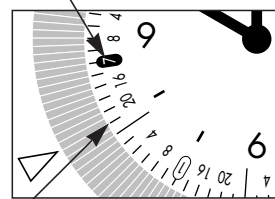
##### Modèle hebdomadaire (7 jours) Jours de la semaine



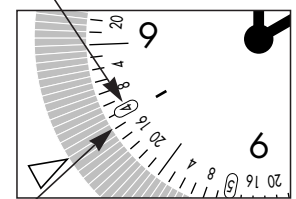
Dimanche (jour = 7)



Jeudi (jour = 4)



ici dimanche 22 h. 00



ici jeudi 14 h. 00

Les jours de la semaine sont représentés par des chiffres :  
1 = lundi, 2 = mardi, 3 = mercredi, 4 = jeudi, 5 = vendredi, 6 = samedi, 7 = dimanche.

## 3 RÉGLAGE DES TEMPÉRATURES

Vous disposez de deux températures de chauffage, réglables entre + 6° C et + 30° C.

### ■ Température confort :

c'est la température que vous souhaitez pendant les heures de présence.

Avec le bouton  vous réglez la température confort souhaitée (le repère correspond à environ 20° C).

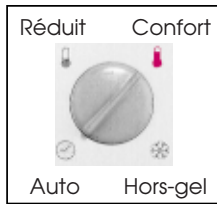
### ■ Température réduite :

c'est la température économique assurée pendant vos absences ou pendant la nuit.







Avec le bouton  vous réglez la température réduite souhaitée (le repère correspond à environ 15° C).

**Nous vous conseillons de régler la température réduite à une valeur inférieure de 4 à 5° C à la température confort.**

## 4 CHOIX DU RÉGIME DE FONCTIONNEMENT



Le sélecteur  permet de choisir le régime de fonctionnement :

-  Régime automatique : Changement automatique des températures confort et réduite suivant les plages horaires programmées par l'horloge.
-  Régime confort permanent : Maintien permanent de la température confort réglée avec le bouton .
-  Régime réduit permanent : Maintien permanent de la température réduite réglée avec le bouton .
-  Régime hors-gel : Maintien permanent d'une température minimale (+ 6° C) assurée pendant vos absences prolongées. Elle met à l'abri votre logement des risques de gel. Pour votre sécurité, cette température n'est pas réglable..



## 5 PROGRAMMATION DE L'HORLOGE

L'horloge à quartz de votre THERMOFLASH TS permet de programmer les plages horaires correspondant aux températures confort et réduite.

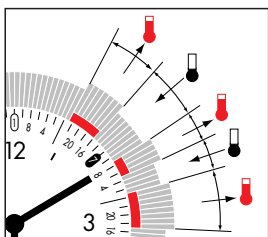
Votre THERMOFLASH TS a été programmé en usine de la façon suivante :





Si cette programmation correspond à votre mode de vie, il est inutile de modifier quoi que ce soit ; sinon, pour modifier la programmation, il faut :

- soulever le couvercle 
- positionner les segments  :

■ vers l'extérieur du disque pour les périodes de température confort (zone rouge visible)



La programmation réalisée se répétera automatiquement tous les jours (modèle journalier) ou toutes les semaines (modèle hebdomadaire) lorsque le sélecteur  est sur la position 

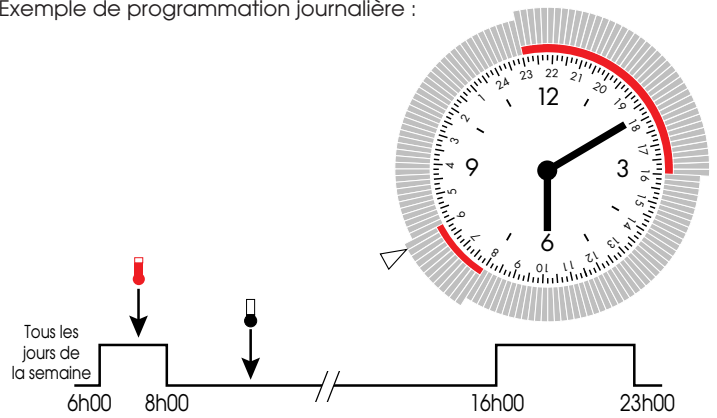
Programmation par pas de :  
 - pour version journalière : 10 minutes.  
 - pour version hebdomadaire : 1 heure.

Intervalle minimum entre deux changements de température :

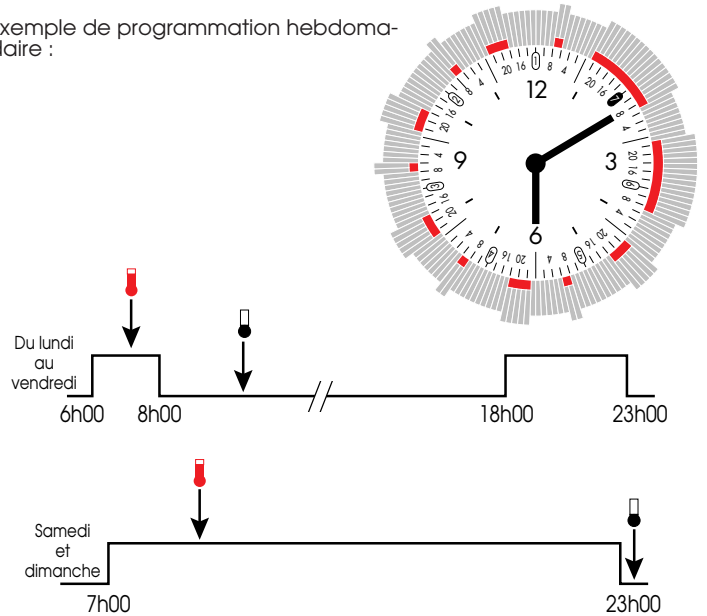
- version journalière : 20 minutes.
- version hebdomadaire : 2 heures.



Exemple de programmation journalière :




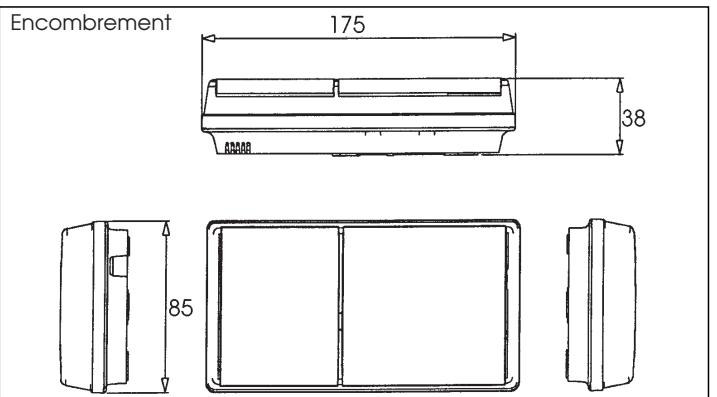
Exemple de programmation hebdomadaire :



Remarque : l'installation de chauffage se mettra en marche à l'heure programmée (ex. 6 h. 00). Si vous vous levez à 6 h. 00, programmez le début de la période confort à 5 h. 00 ou 5 h. 30, suivant l'inertie de l'installation, afin d'obtenir la température confort à 6 h. 00.

## 6 CARACTÉRISTIQUES TECHNIQUES

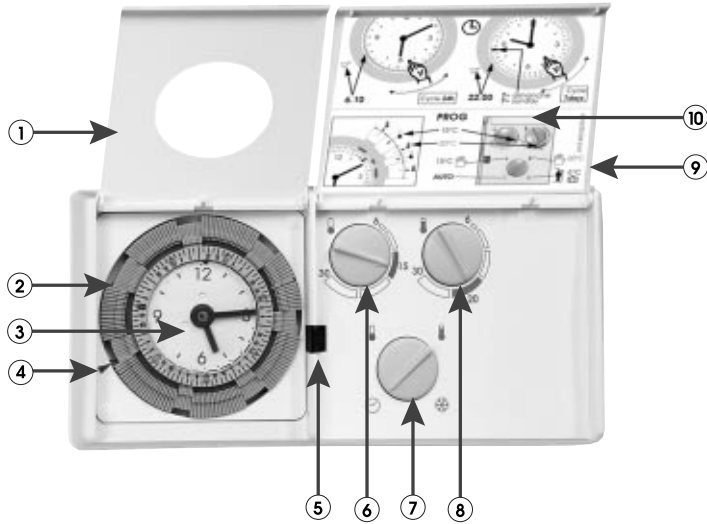
- Plage de réglage des températures confort et réduite : + 6° C à + 30° C
- Hors-gel : + 6° C
- Différentiel statique : 0,3 degré
- Alimentation : 230 V AC +10/-15 %
- Consommation : < 25 mA à 230 V
- Réserve de marche : 72 h après 100 h de fonctionnement.
- Sortie : 1 contact inverseur libre de potentiel
- Pouvoir de coupure : 8 A/250 VAC cos φ = 1  
2 A/250 VAC cos φ = 0,6
- Température de fonctionnement : 0° C à + 50° C
- Température de stockage : - 10° C à + 60° C
- Hygrométrie : 90 % max à + 20° C
- IP 30 
- Raccordement par bornier à vis :  
 Fil rigide jusqu'à 2,5 mm<sup>2</sup>  
 Fil souple jusqu'à 1,5 mm<sup>2</sup>





### ● PRÄSENTATION

Der THERMOFLASH TS ermöglicht es Ihnen, Ihre Heizung entsprechend Ihren Lebensgewohnheiten zu regulieren und sich dabei gleichzeitig behaglich zu fühlen und Energie zu sparen. Er ist für jeden Heiztyp konzipiert: Gas - Öl - Elektrizität.



- |  |   |
|--|---|
| ① Durchsichtige Abdeckung                        | ⑦ Drehknopf zur Auswahl der Betriebsart           |
| ② Programmiersegmente                            | ⑧ Drehknopf zur Regulierung der Komforttemperatur |
| ③ Scheibe zur Zeiteinstellung                    | ⑨ Deckel  |
| ④ Markierung                                     | ⑩ Kurzanleitung                                   |
| ⑤ Kontrolleuchte für Heizungsbetrieb             |   |
| ⑥ Drehknopf zur Regulierung der Absenktemperatur |   |

### ■ ÜBERSICHT

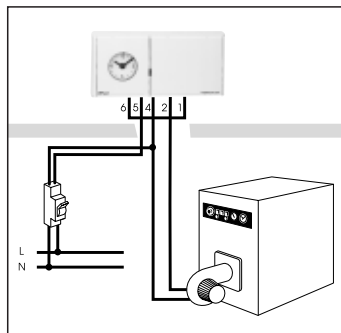
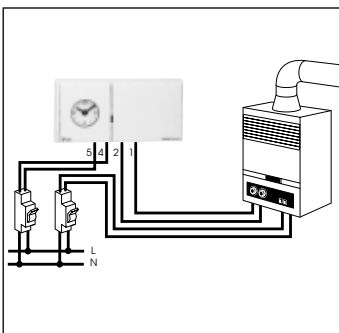
- 1 Installation.  
- Platzierung.  
- Elektrische Anschlüsse.
- 2 Zeit- und Tageseinstellung.
- 3 Temperaturregulierung.
- 4 Betriebsartauswahl.
- 5 Uhrenprogrammierung.
- 6 Technische Daten.

### 1 INSTALLATION

#### ■ Platzierung :

Der Thermo Flash sollte in ca. 1,5 m Höhe an einer Stelle der Innenwand angebracht werden, die vor direkter Sonneneinstrahlung und jeglichen anderen thermischen Einflüssen (bspw. Lampe, Fernseher, etc.) geschützt ist. Versuchen Sie, das Gerät so zu installieren, dass es Ihnen möglich ist, die zwei Schiebedeckel (1 und 9) nach oben zu öffnen.

#### ■ Elektrische Anschlüsse:



### 2 ZEIT- UND TAGESEINSTELLUNG

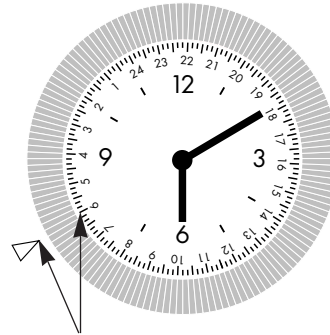
**Muss unbedingt als allererstes gemacht werden!**

- Heben Sie den Deckel ① an.
- Drehen Sie die durchsichtige Scheibe ③ (die Richtung ist egal), um die Zeiger auf die aktuelle Uhrzeit und den aktuellen Tag zu stellen, wobei Sie sich nach der Markierung ④ richten.

#### Beispiele:

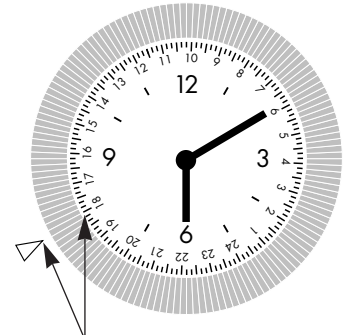
##### Tagesmodell (24 Std.)

hier ist es 06.10 h morgens



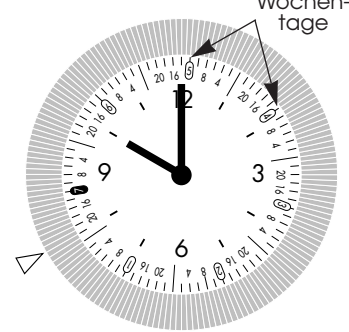
aktuelle Tageszeit an der Markierung

hier ist es 06.10 h abends (18.10 h)

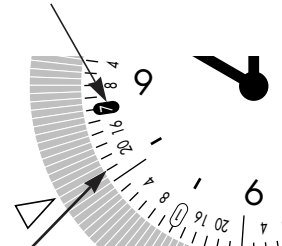


aktuelle Tageszeit an der Markierung

##### Wochenmodell (7 Tage)

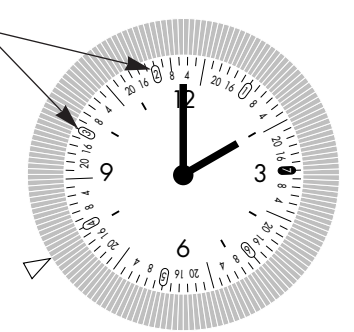


Sonntag (Tag = 7)

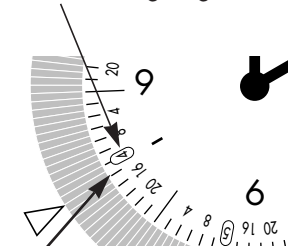


hier ist es Sonntag, 22.00 h

Wochentage



Donnerstag (Tag = 4)



hier ist es Donnerstag, 14.00 h

Die Wochentage sind durch Ziffern angegeben:

- 1 = Montag, 2 = Dienstag, 3 = Mittwoch, 4 = Donnerstag, 5 = Freitag, 6 = Samstag, 7 = Sonntag.

## 3 TEMPERATURREGULIERUNG

Sie verfügen über 2 Heiztemperaturen, einstellbar zwischen + 6° C und + 30° C.

### ■ Komforttemperatur :

Diese Temperatur wünschen Sie während Ihrer Anwesenheit in Ihren Räumen.

Mit dem Schalter **(8)** können Sie die gewünschte Komforttemperatur einstellen (die Markierung entspricht ca. 20°C).

### ■ Absenkttemperatur :

Eine energiesparende Temperatur während Ihrer Abwesenheit oder nachts.


Mit dem Schalter **(6)** können Sie die gewünschte Absenkttemperatur einstellen (die Markierung entspricht ca. 15°C).

Wir schlagen Ihnen vor, die Absenkttemperatur auf einen Wert festzulegen, der 4 bis 5° C unter dem der Komforttemperatur liegt.

## 4 AUSWAHL DER BETRIEBSART



Der Wahlschalter **(7)** ermöglicht die Auswahl der Betriebsart:

 Automatik: Komfort- und Absenkttemperatur werden während der einprogrammierten Perioden automatisch eingestellt.

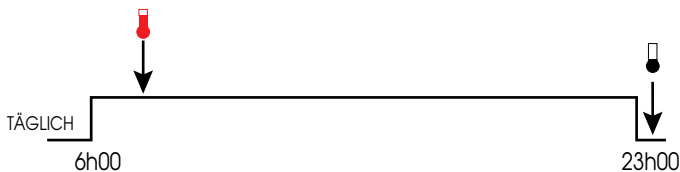
 Komforttemperatur: dauerhaft: Komforttemperatur dauernd - wird mit dem Schalter **(8)** eingestellt

 Absenkttemperatur: dauerhaft: Absenkttemperatur dauernd - wird mit dem Schalter **(6)** eingestellt

 Frostschutz: Aufrechterhaltung einer Mindesttemperatur von **6° C** während längerer Abwesenheit. Diese Funktion schützt vor Frost und ist nicht veränderbar.

## 5 PROGRAMMIERUNG DER UHR

Die Quartzuhr Ihres Thermoflash ermöglicht es Ihnen, die Komfort- und Absenkttemperaturperioden zu programmieren. Im Werk wurde Ihr Thermoflash wie folgt programmiert:

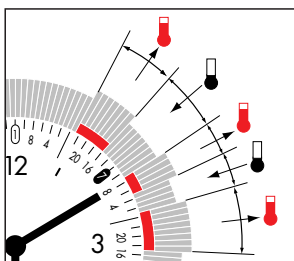



Wenn diese Programmierung Ihren Lebensgewohnheiten entspricht, ist es unnötig, irgendwelche Änderungen vorzunehmen; wenn nicht, ist zur Programmänderung folgendes zu tun:

- Deckel abnehmen **(1)**
- Segmente positionieren **(2)** :

■ nach aussen für die Komforttemperaturperioden (rote Zone sichtbar)

■ nach innen für die Absenkttemperaturperioden (rote Zone verdeckt)



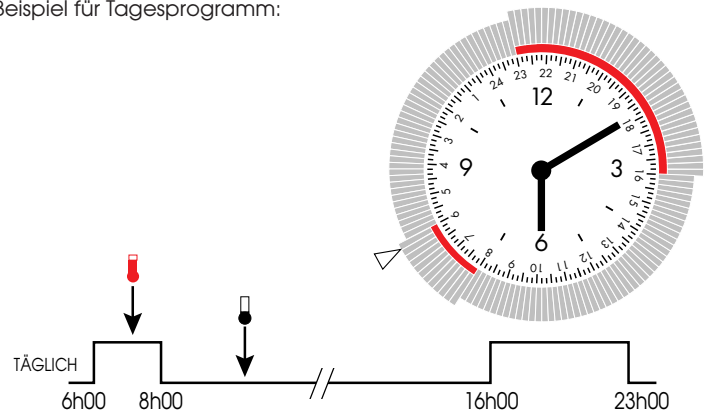
Die eingestellte Programmierung wiederholt sich automatisch täglich (Tagesmodell) oder wöchentlich (Wochenmodell), wenn der Auswahlschalter **(7)** auf der Position  steht.

Programmierschritte:  
- beim Tagesmodell: 10 Minuten  
- beim Wochenmodell: 1 Stunde

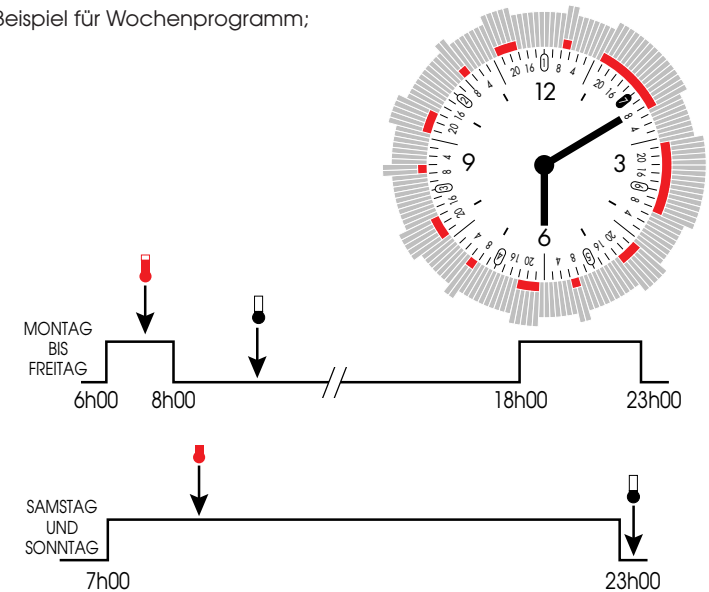
Kürzeste Schaltzeit zwischen 2 Temperaturwechseln:  
- Tagesmodell: 20 Minuten  
- Wochenmodell: 2 Stunden



Beispiel für Tagesprogramm:




Beispiel für Wochenprogramm:

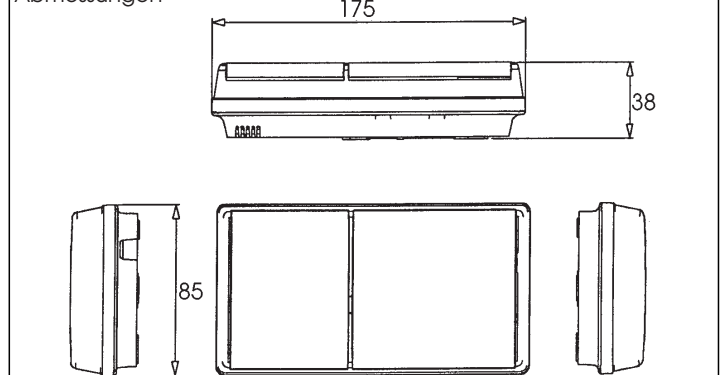


Anmerkung: Die Heizungsanlage beginnt mit der eingestellten Uhrzeit zu arbeiten (z. B. 06.00 h). Wenn Sie um 06.00 h aufstehen, legen Sie den Beginn der Heizperiode auf 05.00 h oder 05.30 h fest (je nach Trägheit der Anlage), um ab 06.00 h die Komforttemperatur genießen zu können.

## 6 TECHNISCHE DATEN

- Regelbereich von Komfort- und Absenkttemperatur: + 6° C bis + 30° C
- Frostschutz: 6° C fest
- Statische Schaltdifferenz: 0,3 Grad
- Versorgungsspannung: 230 V AC +/- 15 %
- Leistungsaufnahme: < 25 mA bei 230 V
- Gangreserve : 72 Stunden (nach 100 Stunden unter Spannung)
- Ausgang: 1 Potentialfreier Wechsler
- Schaltleistung: 8 A/250 VAC cos φ = 1  
2 A/250 VAC cos φ = 0,6
- Betriebstemperatur: 0° C bis + 50° C
- Lagertemperatur: - 10° C bis + 60° C
- Luftfeuchtigkeit: max.90 % bis 20° C
- IP 30 
- Anschluss durch Schraubklemmen:  
Starrer Draht bis 2,5 mm<sup>2</sup>  
Flexibler Draht bis 1,5 mm<sup>2</sup>

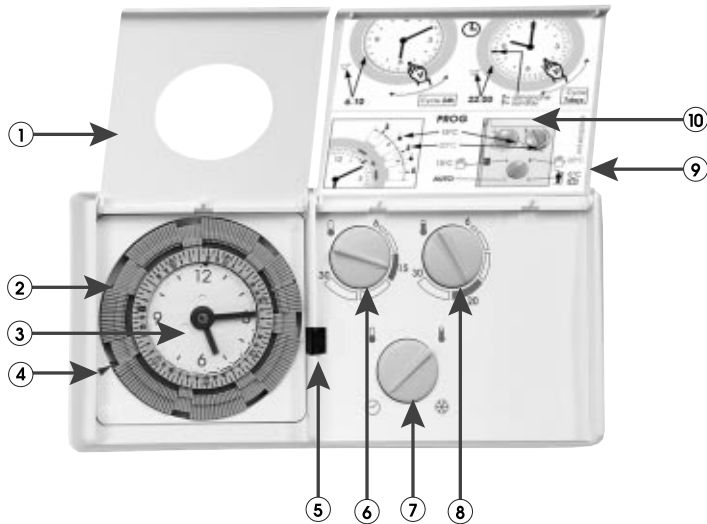
Abmessungen





### ● INTRODUCTION

The THERMOFLASH TS allows control of your heating system to suit your own particular way of life, assuring your comfort and improving energy management. It has been conceived for all types of heating, i.e. gas, fuel oil or electric.



- ① Transparent cover
- ② Programming segments
- ③ Time setting disk
- ④ Time setting mark
- ⑤ Heating operation indicator
- ⑥ Reduced temperature control button
- ⑦ Mode selector
- ⑧ Comfort temperature control button
- ⑨ Cover
- ⑩ Label (brief instructions)

### ■ CONTENTS

- 1 Installation.
  - Location.
  - Electrical connections.
- 2 Setting the time and the current day.
- 3 Temperature control.
- 4 Mode selection.
- 5 Timer programming.
- 6 Technical characteristics.

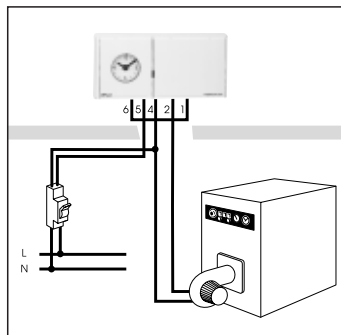
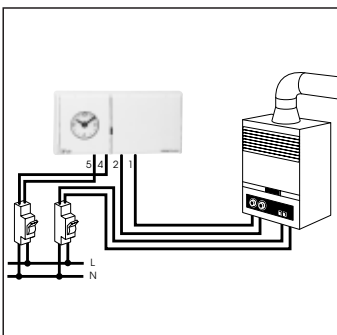
### 1 INSTALLATION

#### ■ Location:

The THERMOFLASH TS must be installed approximately 1.6 m above the floor on an inside wall shaded from direct sunlight and from all thermal influences such as lamps or a television set etc.

Place it in a location that will allow you to open the two covers (① and ⑨) in the upward direction.

#### ■ Electrical connections:



### 2 SETTING THE TIME AND THE CURRENT DAY

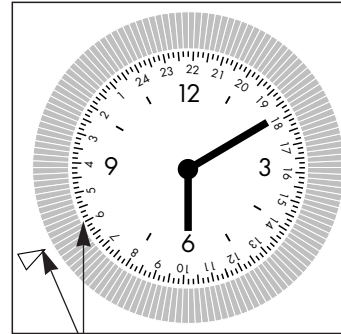
#### This must be done first!

- Raise the cover ①
- Pay attention to the mark ④ when setting the time and day..
- Turn the time setting disk ③ (in any direction) to position the hands on the current time.

#### Examples:

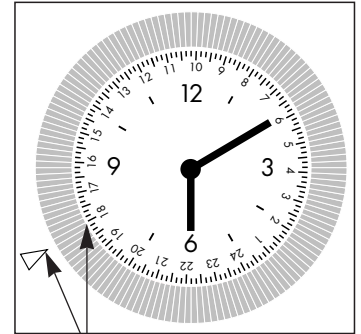
##### Daily model (24h.)

6 h 10 in the morning



Current time opposite the marking

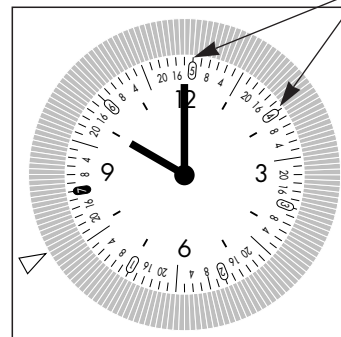
6 h 10 in the evening (18 h 10)



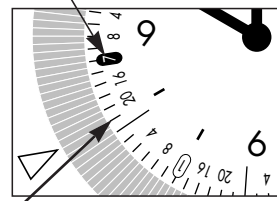
Current time opposite the marking

##### Weekly model (7 days)

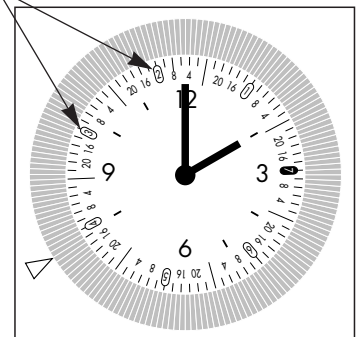
Days of the week



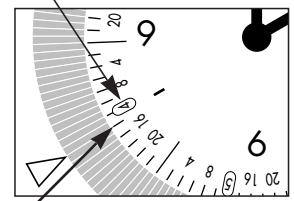
Sunday (Day = 7)



Sunday, 22 h 00



Thursday (Day = 4)



Thursday, 14 h 00


The days of the week are represented by digits:  
 1 = Monday, 2 = Tuesday, 3 = Wednesday, 4 = Thursday, 5 = Friday,  
 6 = Saturday, 7 = Sunday.

## 3 TEMPERATURE CONTROL

You have two heating temperatures at your disposal. These can be controlled between +6 °C and + 30 °C


### ■ Comfort temperature :

This is the temperature you wish to have during your hours of presence.

You control the required comfort temperature with the button  (the marking corresponds to around 20 °C).

### ■ Reduced temperature :

This is the economy temperature ensured during periods when you are absent or during the night.







You control the required reduced temperature with the button  (the marking corresponds to around 15 °C).

**We advise you to set the reduced temperature to a value 4 to 5 °C less than the comfort temperature.**

## 4 MODE SELECTION

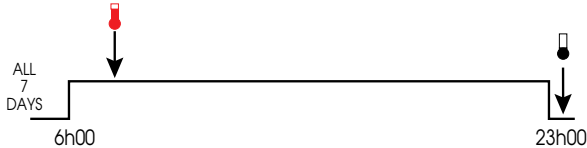


The selector  allows you to choose the mode of operation:



-  **Automatic mode:** This mode maintains the comfort and reduced temperatures according to the time ranges programmed on the timer.
-  **Permanent comfort mode:** This mode permanently maintains the comfort temperature set with the button .
-  **Perm. reduced mode:** This mode permanently maintains the reduced temperature set with the button .
-  **Frost protection mode:** This mode permanently maintains a minimum temperature (6 °C) during prolonged periods of absence, protecting your dwelling against frost hazards. This temperature cannot be varied.

## 5 TIMER PROGRAMMING

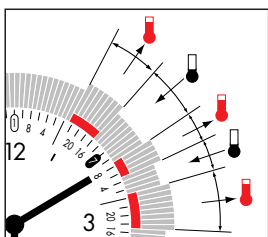
The quartz timer of your THERMOFLASH TS allows you to program the time ranges corresponding to your comfort and reduced temperature settings. Your THERMOFLASH TS has been programmed at the factory as follows:





If these programmed settings meet your requirements, there is no need to make any changes. If you wish to modify the settings, however, you must:

- raise the cover 
- move the segments 

- towards the outside for comfort temperature periods (red zone visible)
- towards the inside for reduced temperature periods (red zone concealed).



Programmed settings will be repeated every day of the week and every week when the selector  is set to 

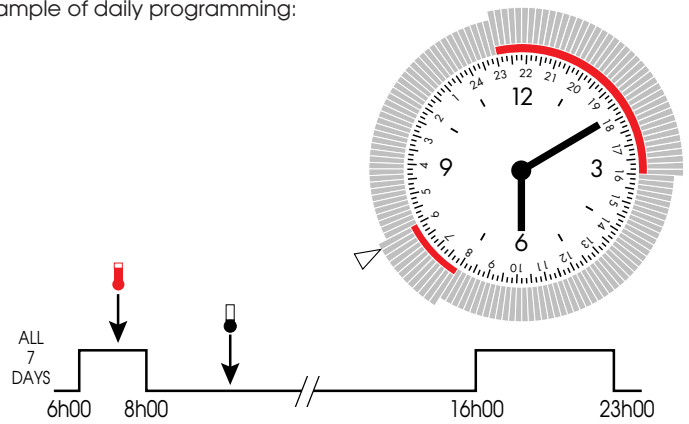
Programming in increments of:  
 - Daily version: 10 minutes  
 - Weekly version: 1 hour.

Minimum interval between two periods:

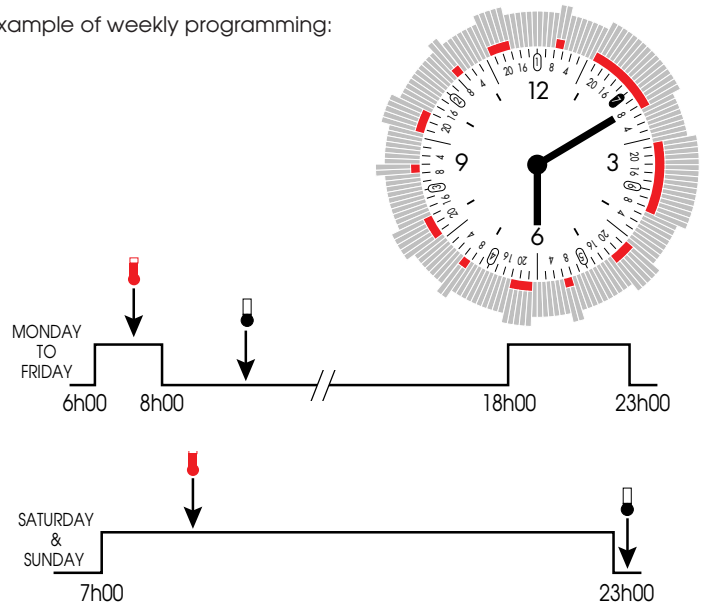
- Daily version: 20 minutes.
- Weekly version: 2 hours.



Example of daily programming:




Example of weekly programming:

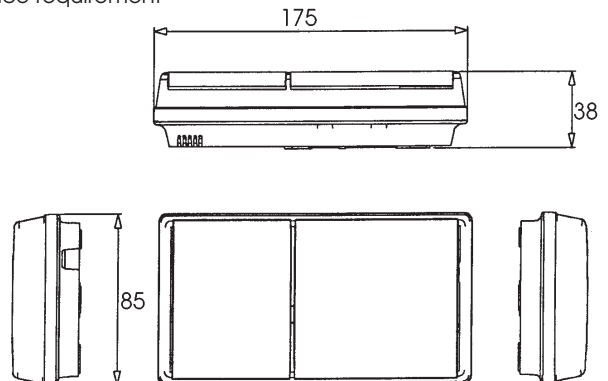


Note: the heating system will start at the programmed time (e.g. 6 h 00). If you get up at 6 h 00, program the start of the comfort period at 5 h 00 or 6 h 30, depending on the inertia of your installation, in order to obtain the comfort temperature at 6 h 00.

## 6 TECHNICAL CHARACTERISTICS

- Comfort and reduced temperature range: + 6 °C to + 30 °C
- Frost protection: 6 °C
- Static differential: 0.3 degree
- Power supply: 230 V +10/-15 %
- Power consumption: < 25 mA by 230 V
- Power reserve: 72 hours (after 100 hours power supply)
- Output: 1 potential-free changeover contact
- Switching capacity: 8 A/250 VAC cos φ = 1  
2 A/250 VAC cos φ = 0.6
- Operating temperature: 0 °C to + 50 °C
- Storage temperature: - 10 °C to + 60 °C
- Humidity: max. 90 % at 20 °C
- IP 30 
- Screw terminal connection:  
rigid wire up to 2.5 mm<sup>2</sup>  
flexible wire up to 1.5 mm<sup>2</sup>

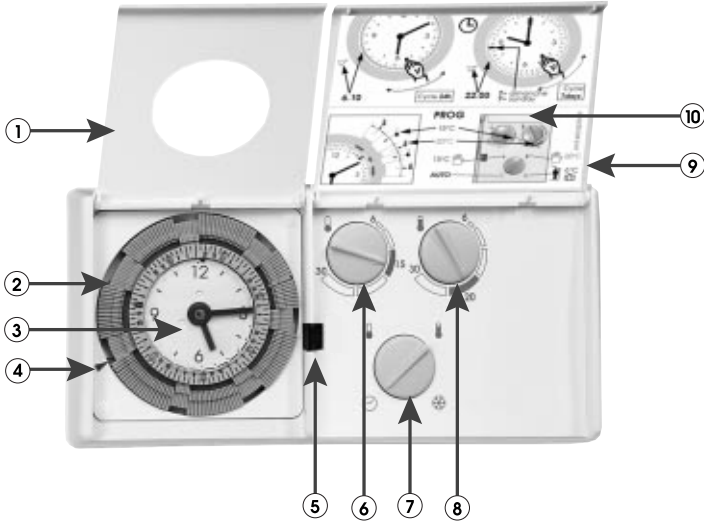
Space requirement





● PRESENTAZIONE

THERMOFLASH TS Vi permette di regolare il riscaldamento in base alle vostre abitudini di vita facendovi sentire a vostro agio e risparmiando energia. E' concepito per qualsiasi tipo di riscaldamento: a gas, a nafta o elettrico.



- ① copertura trasparente
- ② segmenti di programmazione
- ③ disco per la regolazione del tempo
- ④ marcatura
- ⑤ spia di controllo per il funzionamento del riscaldamento
- ⑥ manopola per la regolazione della temperatura ridotta
- ⑦ manopola per selezione
- ⑧ modalità operativa
- ⑨ manopola per la regolazione della temperatura ideale
- ⑩ coperchio
- ⑪ brevi istruzioni

■ INDICE

1 Installazione

- Posizionamento
- Allacciamenti elettrici
- Inserimento batterie

2 Regolazione ora e giorno

3 Regolazione temperatura

4 Selezione modalità operativa

5 Programmazione timer

6 Dati tecnici

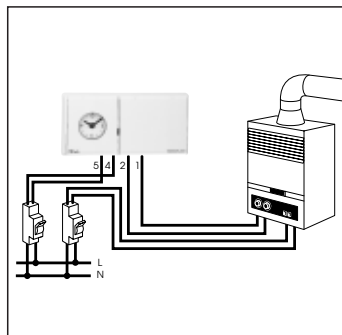
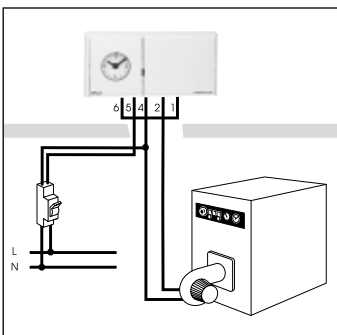
1 INSTALLAZIONE

■ Posizionamento:

THERMOFLASH TS deve essere installato ad un'altezza di 1,5 m in un punto della parete interna protetto dall'irradiazione solare diretto e da qualsiasi altra fonte di calore (per es. lampade, televisore, ecc.).

Cercate di installare l'apparecchio in modo tale che sia possibile aprire verso l'alto i due coperchi scorrevoli (① e ⑨).

■ Allacciamenti elettrici:



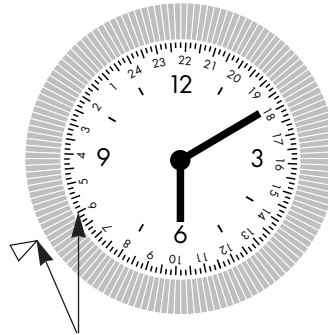
Da effettuarsi assolutamente prima di qualsiasi altra operazione!

- sollevare il coperchio ①.
- ruotare il disco trasparente ③ (la direzione è indifferente) per regolare le lancette sull'ora e sul giorno correnti, **facendo riferimento alla marcatura ④**.

Esempi:

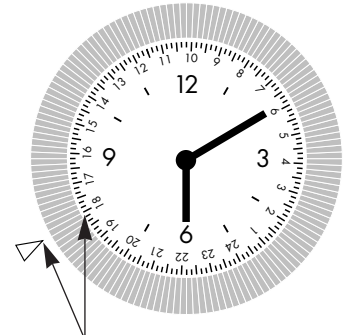
Modello giornaliero:

ore 06.10 di mattina



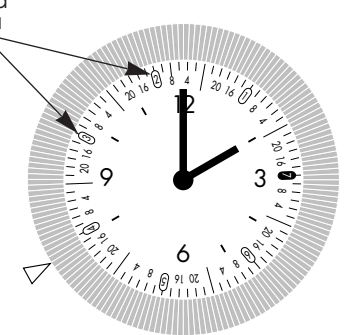
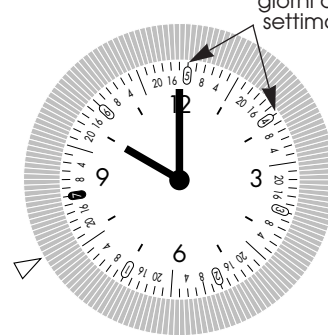
ora corrente sulla marcatura

ore 06.10 di sera (18.10 h.)



ora corrente sulla marcatura

Modello settimanale:



I giorni della settimana sono indicati con dei numeri:  
1=lunedì, 2=martedì, 3=mercoledì, 4=giovedì, 5=venerdì, 6=sabato, 7=domenica.

### 3 REGOLAZIONE DELLA TEMPERATURA

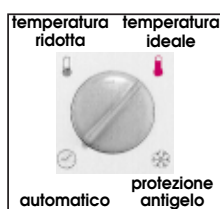
Sono disponibili due temperature di riscaldamento regolabili fra +6°C e +30°C.

■ **Temperatura ideale** ↓ :  
rappresenta la temperatura desiderata durante il soggiorno nei locali. Tramite l'interruttore (8) è possibile regolare la temperatura ideale desiderata (la marcatura corrisponde a 20°C circa).

■ **Temperatura ridotta** ↓ :  
la temperatura adatta per il risparmio energetico durante l'assenza dai locali o la notte. Tramite l'interruttore (6) è possibile regolare la temperatura ridotta desiderata (la marcatura corrisponde a 15°C circa).

Consigliamo di regolare tale temperatura su un valore inferiore di 4-5°C rispetto alla temperatura ideale.

### 4 SELEZIONE MODALITA' OPERATIVA



Il selettore (7) permette di selezionare la modalità operativa:

⌚ automatico: temperatura ideale e ridotta vengono regolate automaticamente durante il periodo programmato

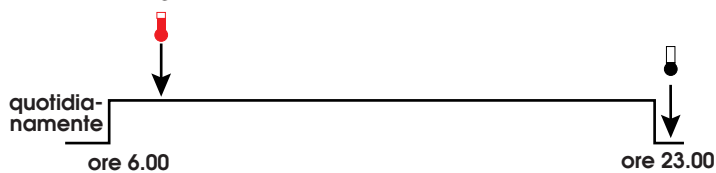
● temperatura ideale costante: una temperatura ideale costante viene attivata tramite l'interruttore (8)

● temperatura ridotta costante: una temperatura ridotta costante viene attivata tramite l'interruttore (6)

❄️ protezione antigelo: mantenimento di una temperatura minima di 6°C durante assenze prolungate. Questa funzione permette la protezione dal gelo e non è regolabile.

### 5 PROGRAMMAZIONE TIMER

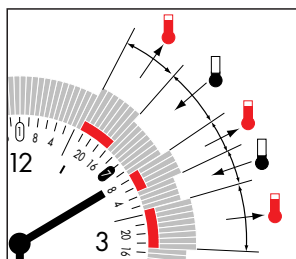
Il timer al quarzo di Thermoflash permette di programmare i periodi di temperatura ideale e ridotta. Thermoflash è stato preprogrammato come segue:



Se tale programmazione corrisponde alle vostre abitudini di vita non è necessario effettuare nessuna modifica; in caso contrario attenersi alle seguenti istruzioni per la modifica del programma:

- togliere il coperchio (1).
- posizionare i segmenti (2):

- verso l'esterno per i periodi di temperatura ideale (zona rossa visibile)
- verso l'interno per la temperatura ridotta (zona rossa coperta)



La programmazione regolata si ripete quotidianamente (modello giornaliero) o settimanalmente (modello settimanale), quando il selettore (7) si trova sulla posizione ⌚.

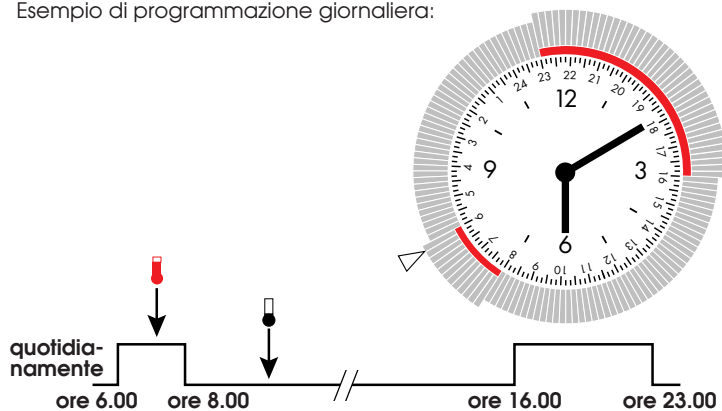
- Passi di programmazione:
- per modello giornaliero: 10 minuti
  - per modello settimanale: 1 ora

Tempo minimo di commutazione fra due cambiamenti di temperatura:

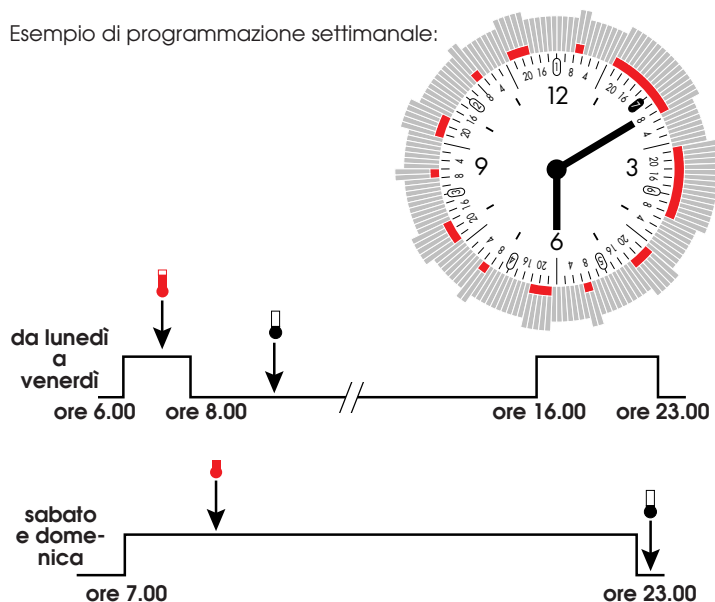
- modello giornaliero: 20 minuti
- modello settimanale: 2 ore



Esempio di programmazione giornaliera:



Esempio di programmazione settimanale:

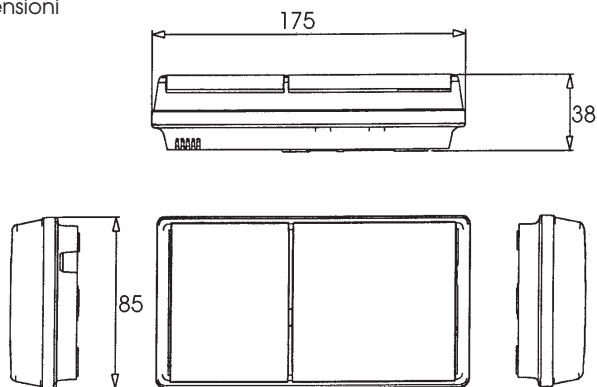


Nota: l'impianto di riscaldamento inizia a funzionare a partire dall'orario regolato (per es. alle ore 6.00). Se per es. ci si alza alle 6.00, si consiglia di regolare l'inizio del riscaldamento alle 5.00 o alle 5.30 (a seconda della potenza dell'impianto), per poter godere della temperatura ideale già dalle 6.00.

### 6 DATI TECNICI

- Campo di regolazione della temperatura ideale e di quella ridotta: +6°C fino +30°C.
- protezione antigelo: 6°C fissa
- Campo d'intervento statico: 0,3° gradi
- Tensione di alimentazione: 230 V AC +10/-15%
- Potenza assorbita: < 25mA a 230 V
- Riserva di funzionamento: 200 ore (dopo 100 ore sotto tensione)
- Uscita: 1 contatto di commutazione a potenziale zero
- Potere di apertura: 8 A/260 VAC cos φ = 1  
2 A/250 VAC cos φ = 0,6
- Temperatura d'esercizio: da 0° a +50°C
- Temperatura di conservazione: da -10° a +60°C
- Umidità dell'aria: max. 90% fino a 20°C
- IP 30
- Allacciamento tramite morsetti a vite  
filo rigido fino a 2,5 mm<sup>2</sup>  
filo flessibile fino a 1,5 mm<sup>2</sup>

Dimensioni





# Flash

THERMOFLASH TS

